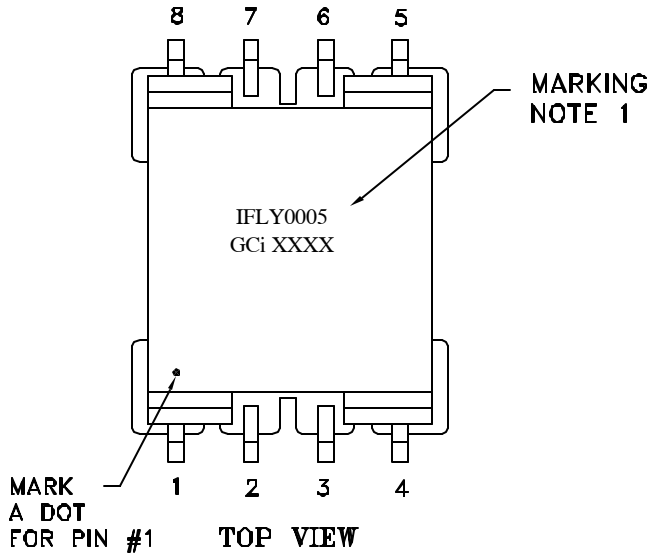
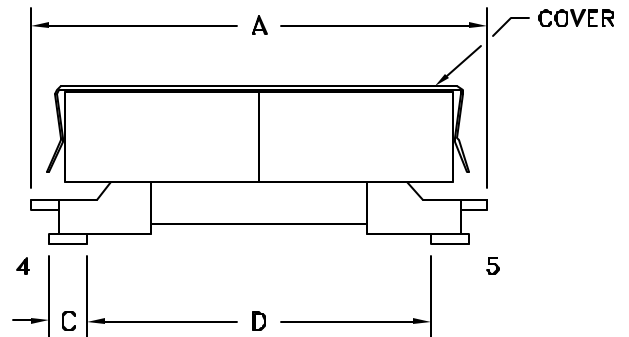
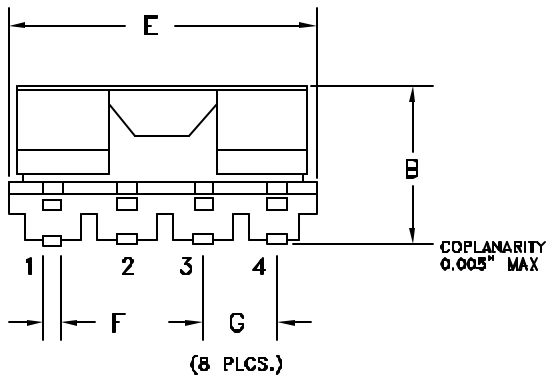


MECHANICAL REQUIREMENTS:



DIMENSIONS TABLE		
REF.	mm	INCHES
A	25.4 MAX	1.00 MAX
B	9.14 MAX	0.36 MAX
C	1.5±0.5	0.06±0.02
D	16.0±0.5	0.63±0.02
E	17.0 MAX	0.67 MAX
F	1.0	0.039
G	3.75±0.25	0.148±0.010

UNLESS OTHERWISE SPECIFIED,
TOLERANCES ARE IN INCHES.
.X ±0.1, .XX ±0.01, .XXX ±0.005
ANGLE: ±5°



ELECTRICAL REQUIREMENTS:

INDUCTANCE (8-1): 0.75µH ±10% @ 100KHz, 1V

LEAKAGE INDUCTANCE (8-1): 100nH MAX @ 100KHz, 1V 7,2,6,3,5,4 SHORTED

URNS RATIO (7-2):(6-3)=1.00 REF @ 100KHz, 1V

(7-2):(5-4)=1.00 REF

(7-2):(8-1)=4.80 REF

RDC (8-1): 10.0mΩ MAX

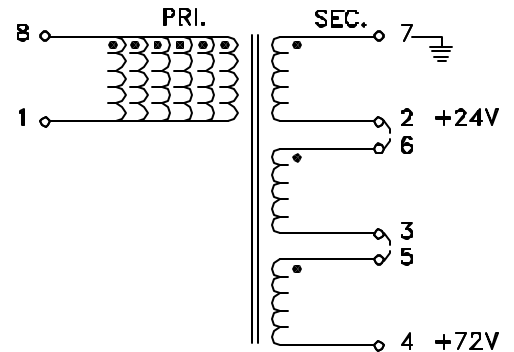
(7-2): 250mΩ MAX

(6-3): 250mΩ MAX

(5-4): 250mΩ MAX

HIPOT: 500VAC 1 SECOND BETWEEN PIN 8 AND 7,6,5

SCHEMATIC:



REV	DESCRIPTION	DATE	BY	TITLE: FLYBACK TRANSFORMER			
0	CREATING ONE PAGE DRAWING.	08/15/01	CST	DRWN: CST	UNITS:	CHKD:	APPD:
				DATE: 08/15/01	SCALE: NTS	RELEASED BY:	
				GCI PART NO.: G013248	CUST PART NO.: IFLY0005		
				GCI [®] technologies			SHEET: 1 OF 1